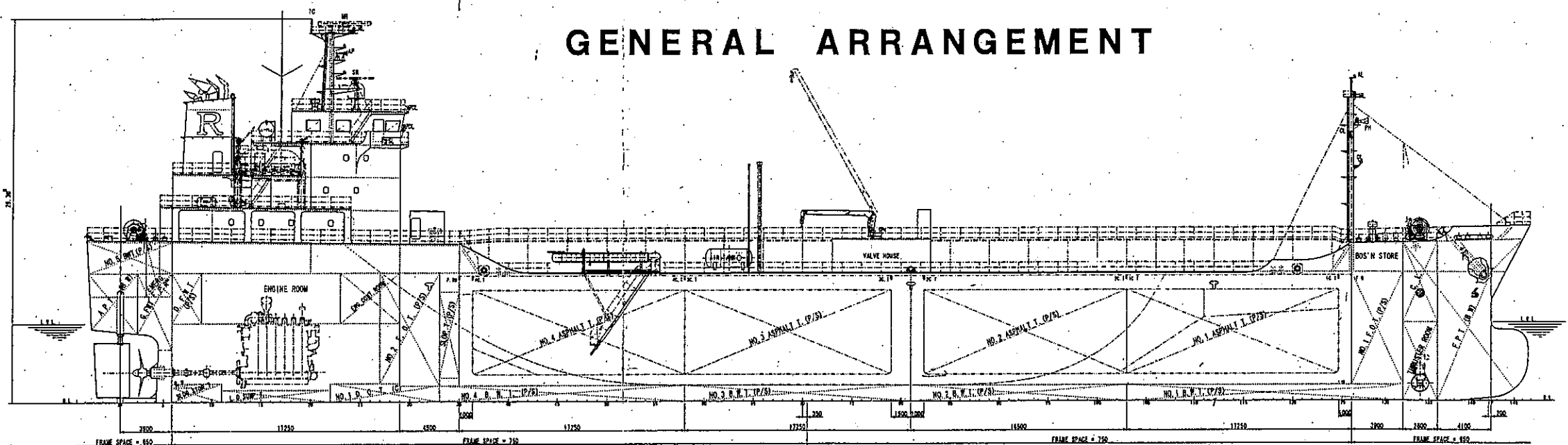
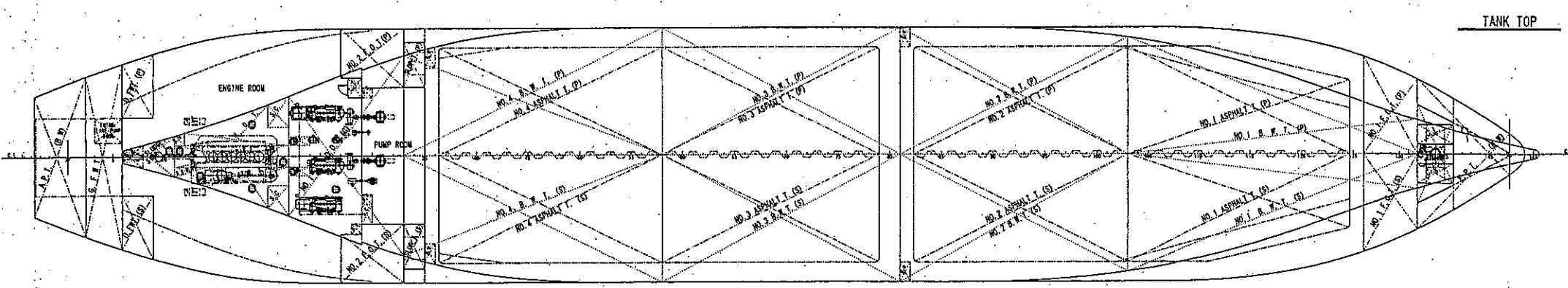
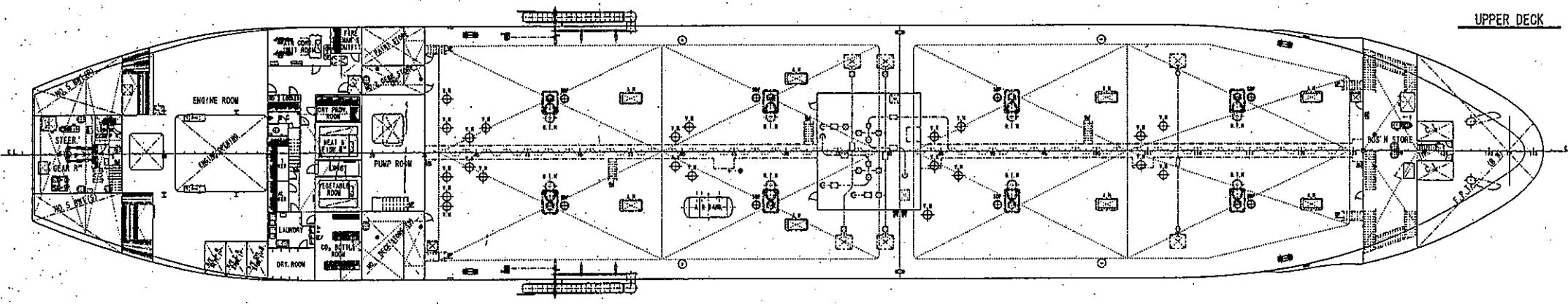
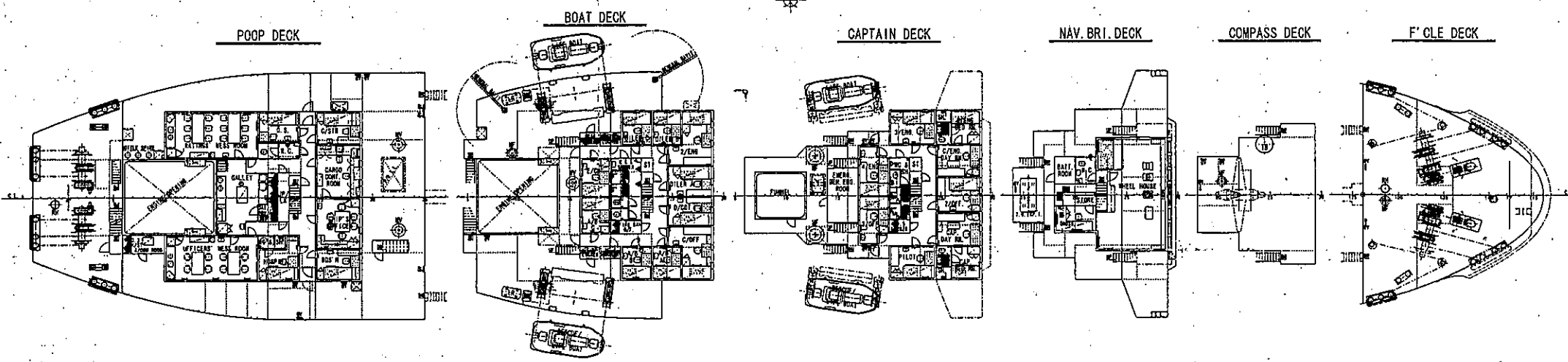


GENERAL ARRANGEMENT

N O T E
 15th. JUL. 2002 打ち合わせ用として作成する
 3 & 12. Sep. 2002 打ち合わせにより修正する。
 10th. Oct. 2002 船主殿承認により修正する。
 23th. Nov. 2003 DRAWN BY FINISHED PLAN.



PRINCIPAL PARTICULARS	
LENGTH (O.A)	109.99 M
LENGTH (P.P)	104.50 M
BREADTH (MLD)	18.20 M
DEPTH (MLD)	9.60 M
DRAFT (SUMMER EXT.)	6.013 M
DEAD WEIGHT (SUMMER)	6067.617 T
GROSS TONNAGE	5072 T
MAIN ENGINE	1 SET
M. C. O.	3089 kW (4200 PS) × 210 min ⁻¹
C. S. O. (90%)	2780 kW (3780 PS) × 203 min ⁻¹
TAIL SPEED (4/4)	14.096 KNODT
COMPLEMENT	20 P
CLASSIFICATION	NK NS* (Tanker oil F.P. above 60°C & Asphalt) MNS*




FINAL PLAN

SHIP No.	S No. 373
NAME OF OWNER	RIINA SHIPPING CO. LTD
NAME OF SHIP	NEW MILLENNIUM
KIND OF SHIP	ASPHALT & OIL TANKER

D/W 6000^T TYPE ASPHALT & OIL TANKER

GENERAL ARRANGEMENT

(一般配置図)

SCALE	1/200
 KURINOURA DOCKYARD CO. LTD YAWATAHAMA JAPAN	
DRAWN BY	H. K
CHECKED BY	
CHIEF OF PART	
CHIEF OF SECT	<i>[Signature]</i>
DATE	JUL. -15-2002
DRAWING NO.	H - 2